

DRAWING NUMBER  
**53/39**

PLAN HOLD CORPORATION • IRVINE, CALIFORNIA  
REORDER BY NUMBER 07348  
PERSONAL USE OF THIS PLAN IS PROHIBITED

# STONEBRIDGE PLAT NO. 2

A part of SOUTHERN MANOR P.U.D.

Lying in the east 1/2 of the southeast 1/4 of Section 35 and being a replat of a portion of the south 1/2 of Block 69, Palm Beach Farms Company, Plat No. 3, Plat Book 2, Pages 45-54 (inclusive,) Section 36, all in Township 46 South, Range 41 East, Palm Beach County, Florida.

OCTOBER, 1985

SHEET 2 OF 7

**39**

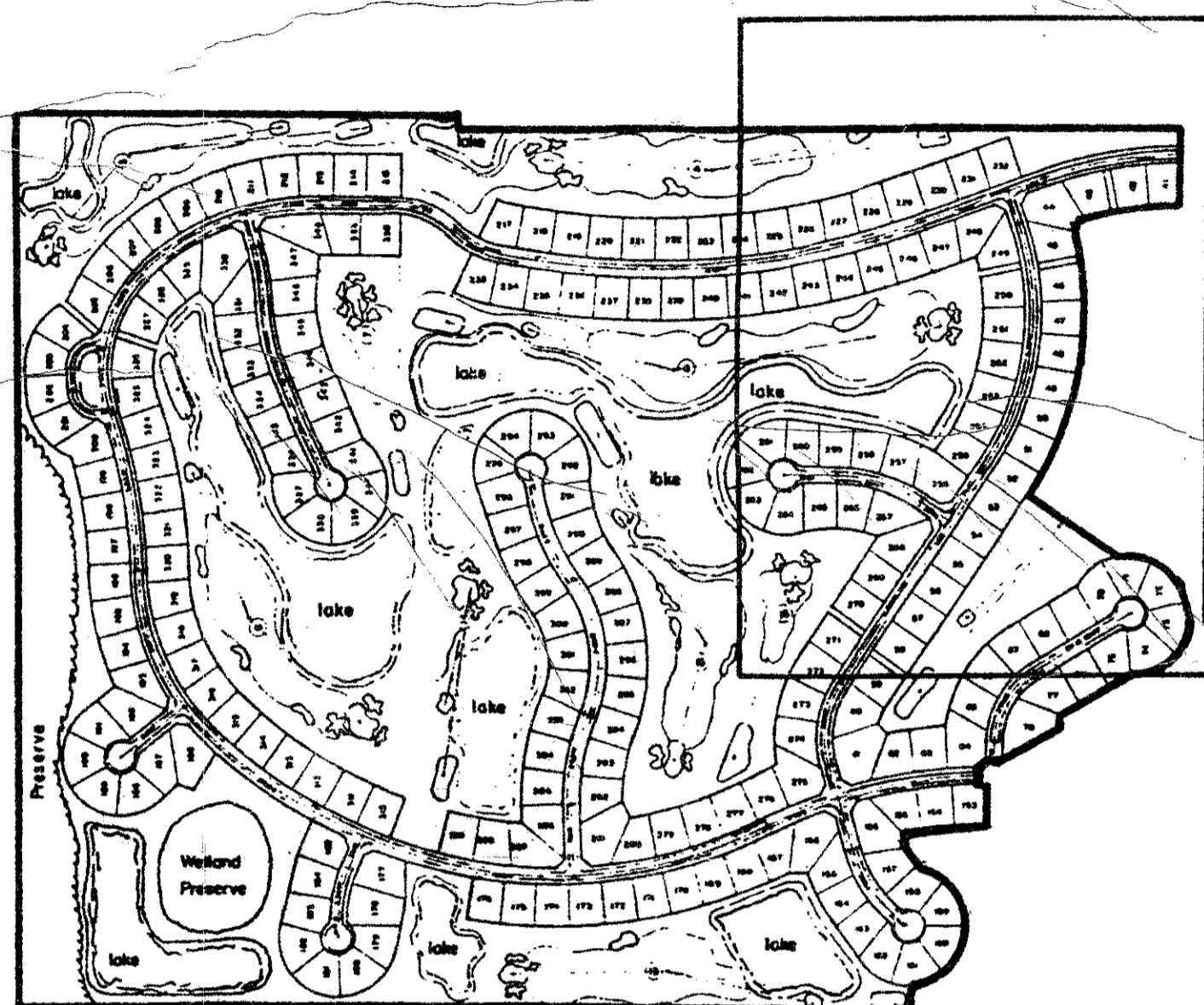


State of Florida )  
County of Palm Beach )

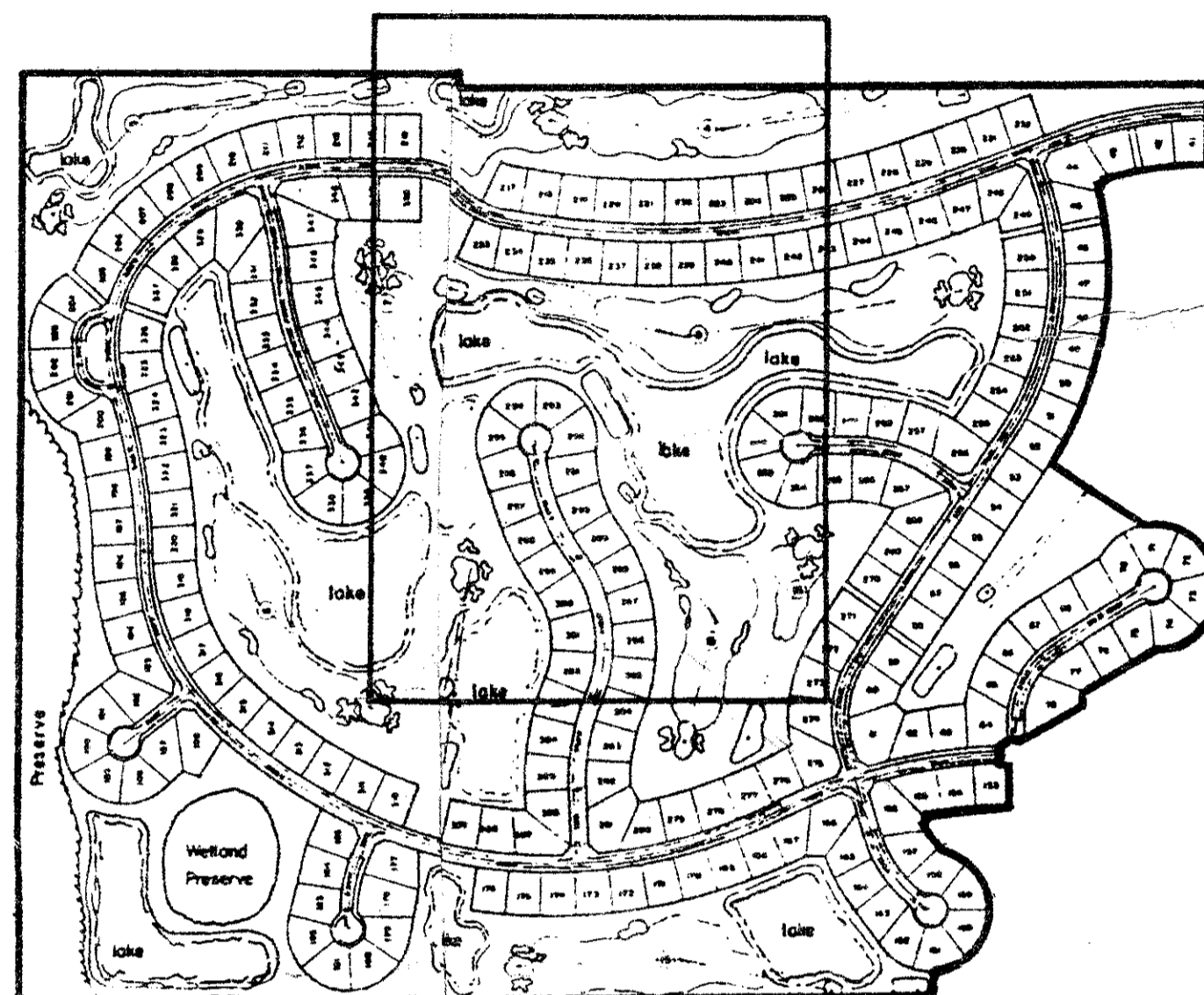
This Plat was filed for record at \_\_\_\_\_, this \_\_\_\_\_ day of \_\_\_\_\_, A.D., 1985, and duly recorded in Plat Book \_\_\_\_\_ on pages \_\_\_\_\_ and \_\_\_\_\_

John B. Dunkle,  
Clerk of the Circuit Court.

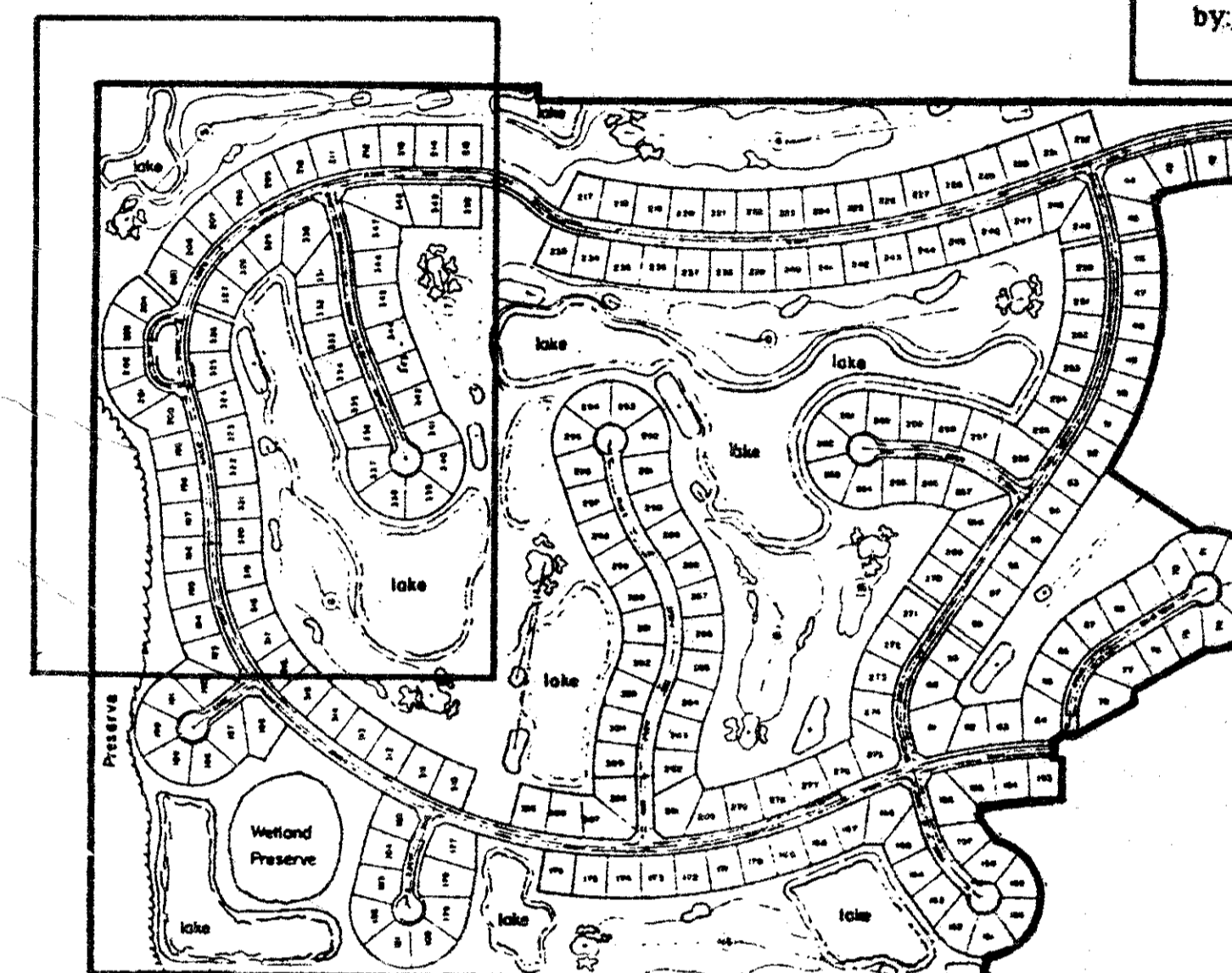
by: \_\_\_\_\_ D.C.



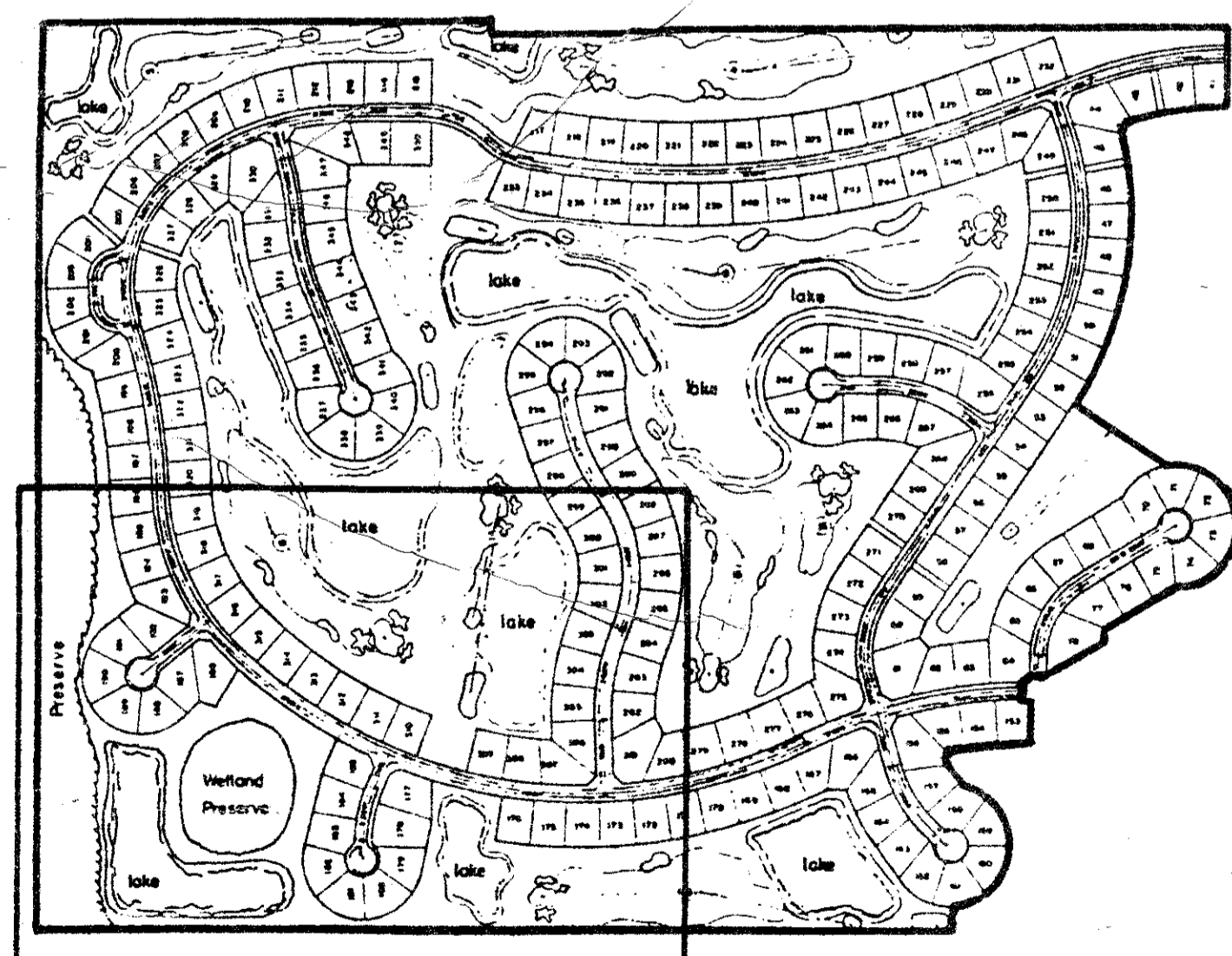
SHEET 3 OF 7



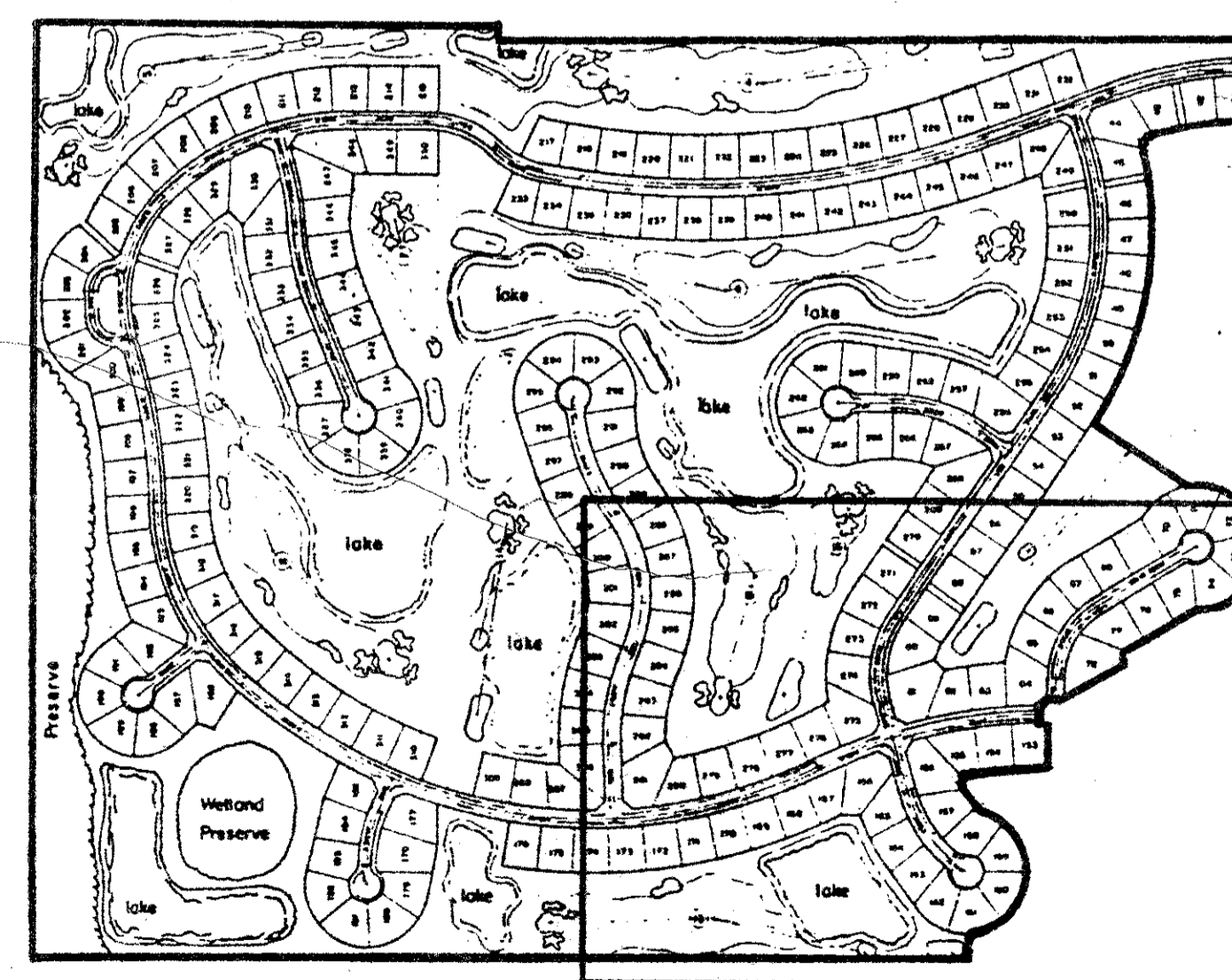
SHEET 4 OF 7



SHEET 5 OF 7



SHEET 6 OF 7



SHEET 7 OF 7

**53/39**  
0420-002

**BENCH MARK**  
land surveying and mapping, inc.  
WEST PALM BEACH, FLORIDA

CONRAD W. SCHAEFER CONSULTING ENGINEERS, INC.  
PALM BEACH COUNTY, FLORIDA

A part of SOUTHERN MANOR P.U.D.  
**STONEBRIDGE PLAT NO. 2**

RECORD PLAT

DESIGNER	DRAWN	CHECKED	JOB NO.	DRAWING NO.
	E. OSGARD		PRACO	
DATE	SCALE	APPROVED	FILE NO.	SHEET OF
OCT, 1985	N/A			2 7

This instrument was prepared by Wm. R. Van Campen, R.L.S., in and for the offices of Bench Mark Land Surveying and Mapping, Inc., Four Points Centre, 50 South Military Trail, Suite 200, West Palm Beach, Florida, 33415. Phone: (305) 689-2111

DRAWING NUMBER

PLAN HOLD CORPORATION • IRVINE, CALIFORNIA  
REORDER BY NUMBER 07348  
PERSONAL USE OF THIS PLAN IS PROHIBITED

DRAWING NUMBER

PLAN HOLD CORPORATION • IRVINE, CALIFORNIA  
REORDER BY NUMBER 07348  
PERSONAL USE OF THIS PLAN IS PROHIBITED

DRAWING NUMBER

PLAN HOLD CORPORATION • IRVINE, CALIFORNIA  
REORDER BY NUMBER 07348  
PERSONAL USE OF THIS PLAN IS PROHIBITED